



DLF/DLH1015-V

10.1" TFT LCD, LED Backlight 1000nits, WSVGA

10.1" TFT LCD panel, built-in 1000 nits high bright for sunlight readable LCD display, high transmittance color filter, high transmission polarizing plates, Low Power Consumption, suitable for kiosk, advertising, POS, marline, transportation, gaming, studio display, gas pump.

Key Features

- Sunlight Readable
- LED Backlight
- High Shock & Vibration Resistance
- Low Power Consumption
- Wide Operation Temp. (-20°C~70°C)
- High Uniformity
- Low EMI Noise
- Wide Dimming
- Life Expectancy



Specifications

V1

Model No.	DLF1015-V	DLH1015-V
Description	10.1" TFT LCD, LED Backlight 1000nits, WSVGA	
Display Area (mm)	222.7 x 125.3 mm	
Brightness	1000 cd/m ²	
Resolution	1024 x 600 (WSVGA)	
Contrast Ratio	900 : 1	
Pixel Pitch (mm)	0.2175(H) x 0.2088(V)	
Viewing Angle	+80°~-80°(H), +80°~-80°(V)	
Display Colors	16.7M	
Response Time (Typical)	16ms (Typical)	
Sync	LVDS	
Power Consumption	4.5W / 6.36W	
Dimensions (mm)	235.0(H) X 143.0(V) X 5.5(D) mm	
Weight (Net)	0.3kg	
LED Driving Board	LID 10A	
Control Board (Optional)	<input type="checkbox"/> AD6038G <input type="checkbox"/> AD6038GA	
	<input type="checkbox"/> AD6038G	VGA
	<input type="checkbox"/> AD6038GA	VGA+Audio
F / R Control Button	<input type="checkbox"/> 4 Key	
	<input type="checkbox"/> 4 Key	Power Switch, Menu, Select (+,-),
OSD Menu	Brightness, Contrast, H/V Position, Color, Phase, Clock...	
Optional	<input type="checkbox"/> AOT <input type="checkbox"/> Touch Screen	

Specifications are subject to change without notice.

All brands or product names are trademarks or registered trademarks of their respective companies.

DLF = Panel+LED Driving Board

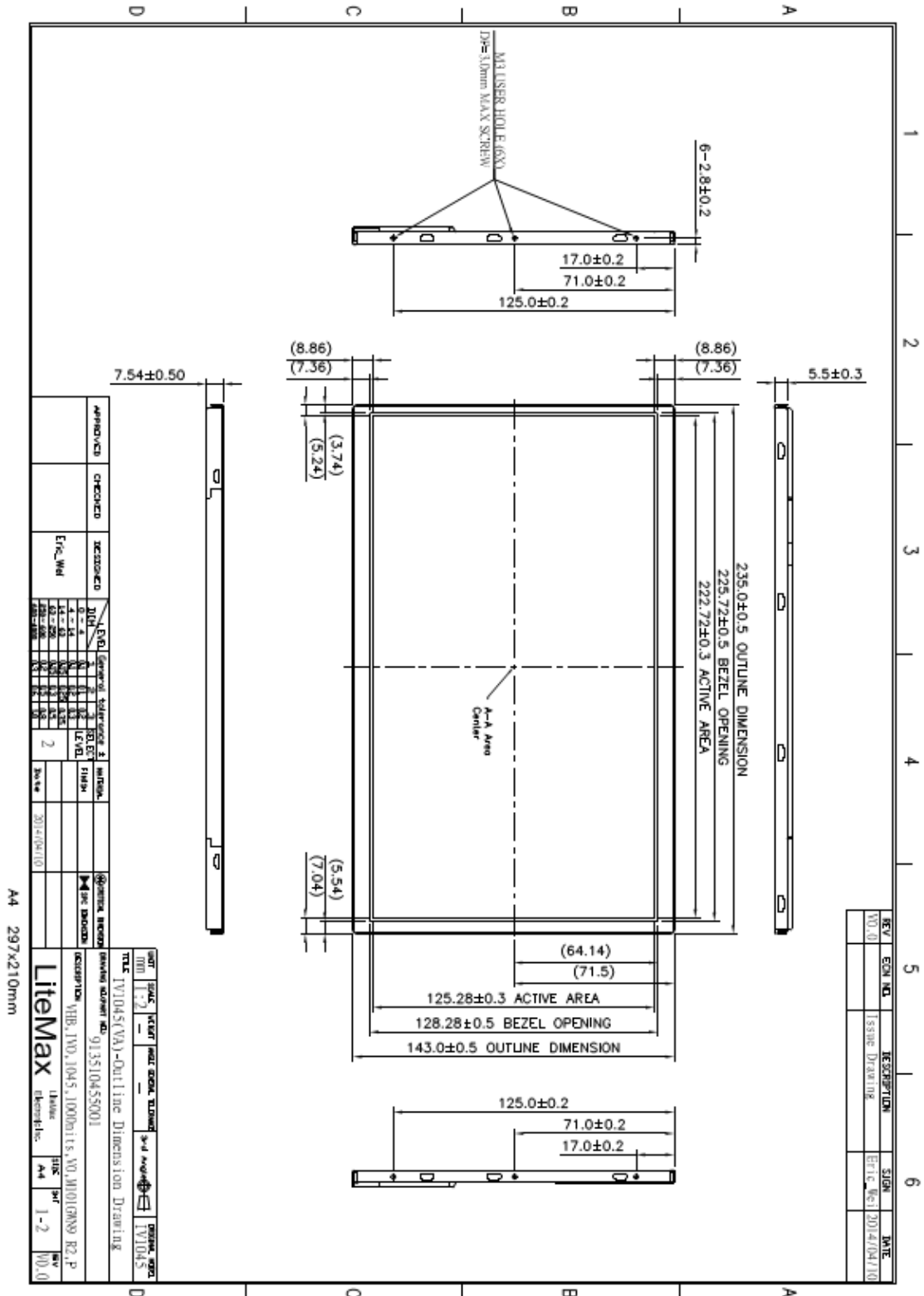
DLH= Panel+LED Driving Board+Control Board

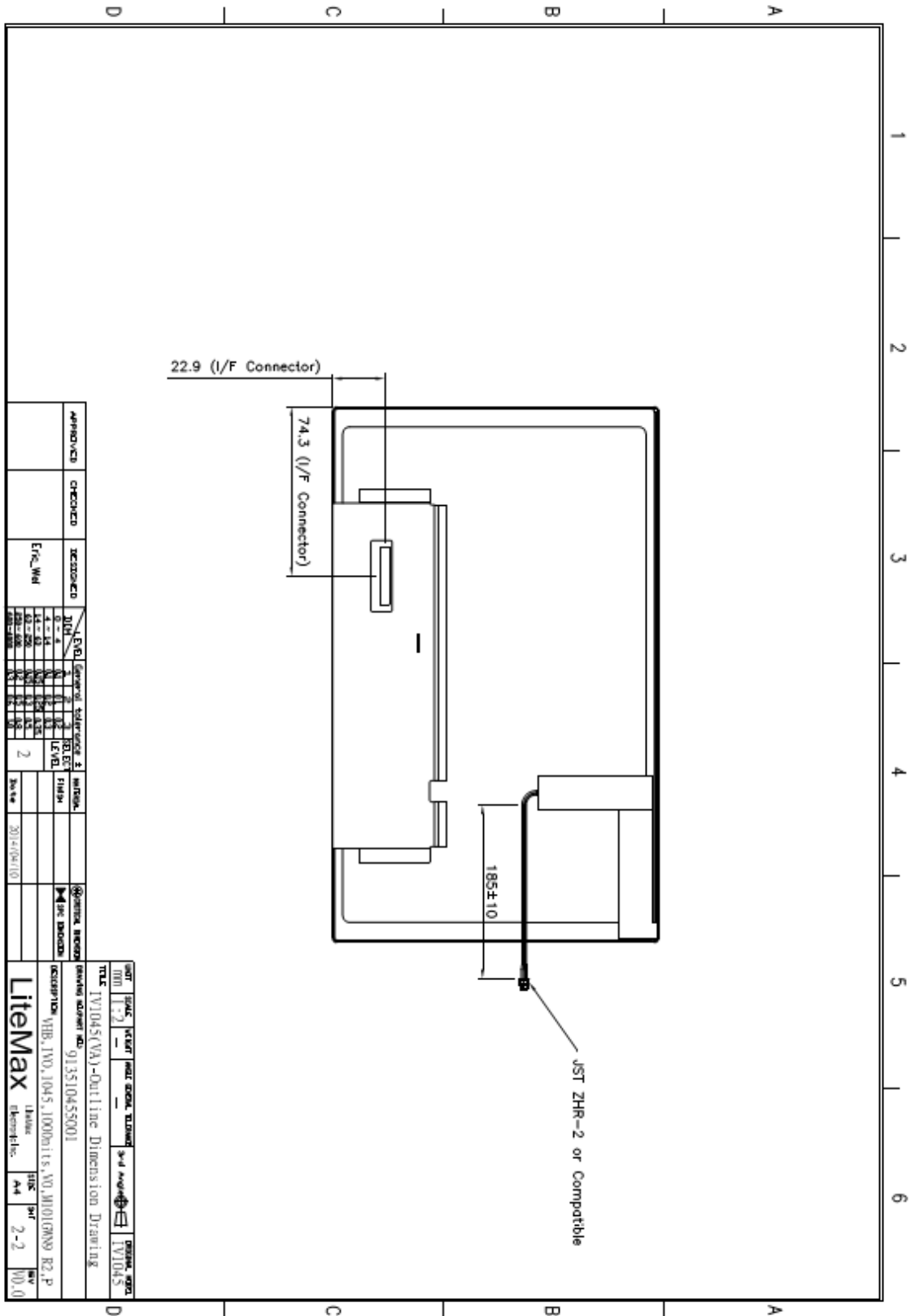


Mechanical Drawing

Outline Dimensions

Unit:mm





APPROVED	CHECKED	DESIGNED	DATE	REV	DESCRIPTION
		Eric.Wei	4-14	1	Initial
			4-14	2	Final
			4-14	3	
			4-14	4	
			4-14	5	
			4-14	6	
			4-14	7	
			4-14	8	
			4-14	9	
			4-14	10	
			4-14	11	
			4-14	12	
			4-14	13	
			4-14	14	
			4-14	15	
			4-14	16	
			4-14	17	
			4-14	18	
			4-14	19	
			4-14	20	
			4-14	21	
			4-14	22	
			4-14	23	
			4-14	24	
			4-14	25	
			4-14	26	
			4-14	27	
			4-14	28	
			4-14	29	
			4-14	30	
			4-14	31	
			4-14	32	
			4-14	33	
			4-14	34	
			4-14	35	
			4-14	36	
			4-14	37	
			4-14	38	
			4-14	39	
			4-14	40	
			4-14	41	
			4-14	42	
			4-14	43	
			4-14	44	
			4-14	45	
			4-14	46	
			4-14	47	
			4-14	48	
			4-14	49	
			4-14	50	
			4-14	51	
			4-14	52	
			4-14	53	
			4-14	54	
			4-14	55	
			4-14	56	
			4-14	57	
			4-14	58	
			4-14	59	
			4-14	60	
			4-14	61	
			4-14	62	
			4-14	63	
			4-14	64	
			4-14	65	
			4-14	66	
			4-14	67	
			4-14	68	
			4-14	69	
			4-14	70	
			4-14	71	
			4-14	72	
			4-14	73	
			4-14	74	
			4-14	75	
			4-14	76	
			4-14	77	
			4-14	78	
			4-14	79	
			4-14	80	
			4-14	81	
			4-14	82	
			4-14	83	
			4-14	84	
			4-14	85	
			4-14	86	
			4-14	87	
			4-14	88	
			4-14	89	
			4-14	90	
			4-14	91	
			4-14	92	
			4-14	93	
			4-14	94	
			4-14	95	
			4-14	96	
			4-14	97	
			4-14	98	
			4-14	99	
			4-14	100	

A4 297x210mm

DATE	SCALE	REVISED	DATE	BY	REVISION
1/10/05	1:1				
TITLE: IVO1045(VA)-Outline Dimension Drawing					
DRAWING NUMBER: 913510455001					
DESCRIPTION: VHR, IVO, 1045, 10000115, NO, M1010M9, R2, P					
LITENAX					
LITENAX ELECTRONICS					
DATE: 2-2					
REV: 10.0					



Ordering Information

Part Number	Description
DLF1015-VNN-A01	10.1",1000nits,1024*600.LID10A,V01(5 in 1)
DLH1015-VNN-I01	10.1",1000nits,1024*600,LID10A.AD6038GA,DC12V,V01(5 in 1)

Optional Accessories

Part Number	Description
840612051100	ADAPTER.12V.5A.60W.EA1050A,P
810618301010	CABLE.POWER.AC.1830mm USA type
810618301090	CABLE,POWER,AC,1830mm Europe type
810618301050	CABLE.POWER.AC.1830mm UK type
810618301170	CABLE.POWER,AC,1830mm Australia type
810618301030	CABLE.POWER.AC.1830mm Japan type