



DLF/DLH1968-U

19" TFT LCD, LED Backlight,1600nits,SXGA(1280x1024),Wide Temp.

19" TFT LCD panel, built-in 1600 nits brightness for sunlight readable LCD display, high transmittance color filter, high transmission polarizing plates, Low Power Consumption, suitable for kiosk, advertising, POS, marine, transportation, gaming, studio display, gas pump.

Key Features

- Brightness: 1600nits
- LED Backlight
- SXGA(1280x1024) High Definition
- High Shock & Vibration Resistance
- Low Power Consumption
- High Uniformity
- Low EMI Noise
- Wide Dimming
- Wide Temp.: -30~85°C
- Life Expectancy



Specifications

V1

Model No.	DLF1968-U	DLH1968-U
Description	19" TFT LCD, LED Backlight ,1600nits,SXGA(1280x1024),Wide Temp.	
Display Area (mm)	376.32(H) x 301.06(V)mm	
Brightness	1600 cd/m ²	
Resolution	1280x1024 (SXGA)	
Contrast Ratio	1000 : 1	
Pixel Pitch (mm)	0.294(H) x 0.294(V)	
Viewing Angle	+85°~ -85°(H), +80°~ -80°(V)	
Display Colors	16.7M	
Response Time (Typical)	10ms	
Power Consumption	40/43W	
Dimensions (mm)	396x324x14.5mm	
Weight (Net)	2.45kg	
LED Driving Board	LID19A	
Control Board (Optional)	<input type="checkbox"/> AD2662GDVAR	
<input type="checkbox"/> AD2662GD	VGA+DVI	
<input type="checkbox"/> AD2662GDVAR	VGA+DVI (Optional AV/ S-Video/ Component / Audio)	
F / R Control Button	<input type="checkbox"/> 5 Key <input type="checkbox"/> 4 Key	
<input type="checkbox"/> 5 Key	Power Switch, Menu, Select (+,-), Auto	
<input type="checkbox"/> 4 Key	Power Switch, Menu, Select (+,-),	
OSD Menu	Brightness, Contrast, H/V Position, Color, Phase, Clock...	
Optional	<input type="checkbox"/> AOT <input type="checkbox"/> Touch Screen	

Specifications are subject to change without notice.

All brands or product names are trademarks or registered trademarks of their respective companies.

DLF= Panel + LED Driving Board

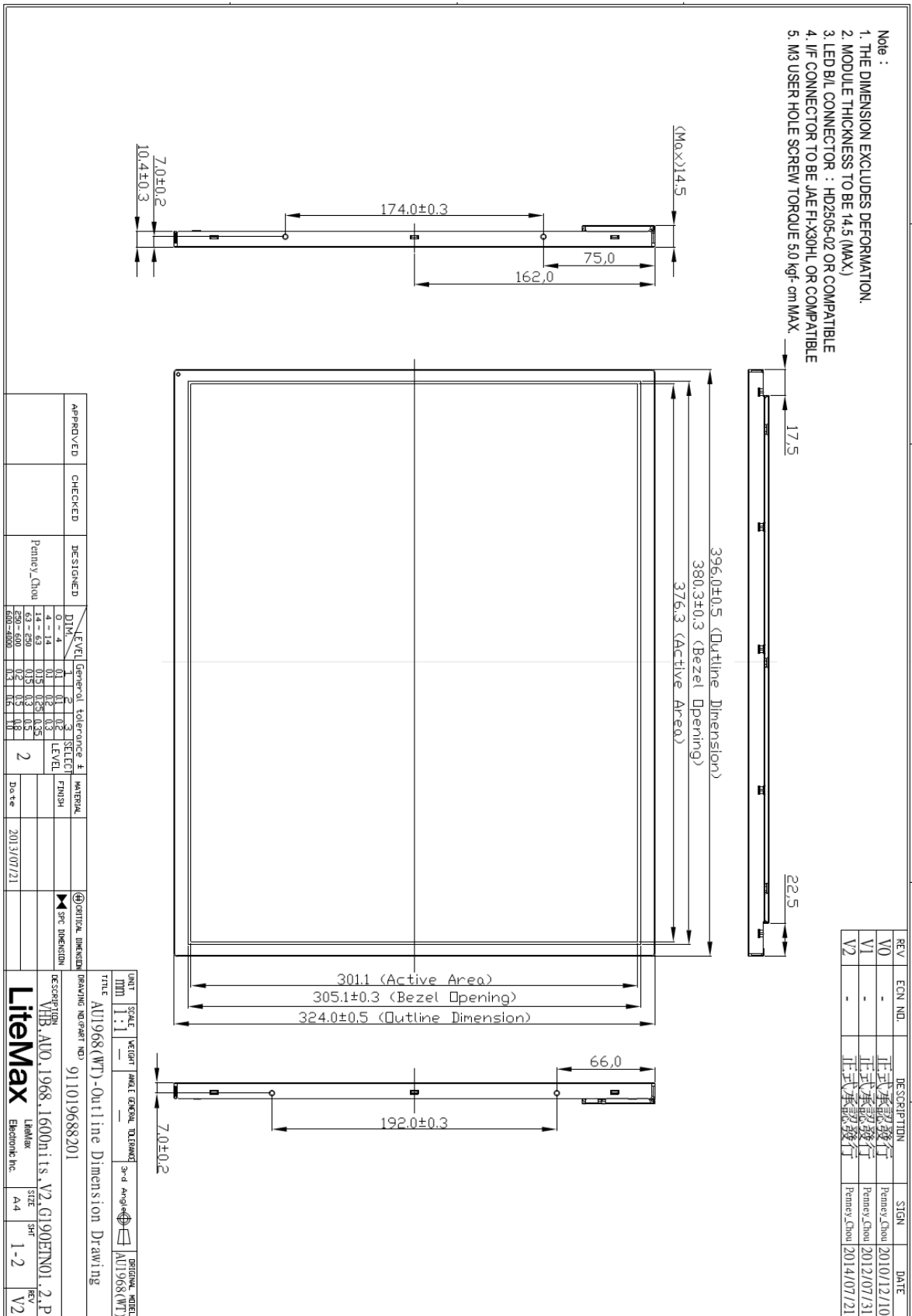
DLH= Panel + LED Driving Board + Control Board



Mechanical Drawing

Outline Dimensions

Unit:mm





Ordering Information

Part Number	Description
DLF1968-UNN-A01	19",1600nits,SXGA,LID19A,V01(5 in 1)
DLH1968-UNN-G01	19",1600nits,SXGA,LID19A,AD2662GD,DC12V,V01(5 in 1)

Optional Accessories

Part Number	Description
840612051210	ADAPTER,AC/DC,12V/5.4A,65W,Atech OEM A065112-TDx.4P,P
810618301010	CABLE.POWER.AC.1830mm USA type
810618301090	CABLE,POWER,AC,1830mm Europe type
810618301050	CABLE.POWER.AC.1830mm UK type
810618301170	CABLE.POWER,AC,1830mm Australia type
810618301031	CABLE.POWER.AC.1830mm Japan type