



DLF/DLH 3255 V4 32" Wide TFT LCD Display, LED Backlight, 1000nits, FHD

DLF/DLH3255 V4 is a Full HD resolution LCD panel, built-in 1000 nits high bright for sunlight readable LCD display, high transmittance color filter, high transmission polarizing plates, Low Power Consumption, suitable for kiosk, advertising, signage, transportation, gaming, studio display, gas pump.

Key Features

- Sunlight Readable
- LED Backlight
- FHD Resolution
- High Shock & Vibration Resistance
- Low Power Consumption
- Low EMI Noise
- Wide Dimming
- Wide Viewing Angle
- Life Expectancy



Specifications

V1

Model No.	DLF3255 V4	DLH3255 V4
Description	32" Wide TFT LCD Display, LED Backlight, 1000 nits, FHD	
Display Area (mm)	698.4 (H) x 392.85(V) mm	
Brightness	1,000 cd/m2	
Resolution	1920 x 1080	
Contrast Ratio	5800 : 1	
Pixel Pitch (mm)	0.3637 (H) x 0.3637 (V)	
Viewing Angle	178°(H), 178°(V)	
Display Colors	16.7M colors	
Response Time (Typical)	8 ms (Typical)	
Power Consumption	68w	83w
Dimensions (mm)	732.4 x 426.85 x 21.4mm	
Weight (Net)	5.5Kg	6.2kg
LED Driving Board	LID32B	
Control Board	<input type="checkbox"/> AD2662GDHVA <input type="checkbox"/> AD2662GDVAR <input type="checkbox"/> AD2662GDHMVAR	
<input type="checkbox"/> AD2662GDHVA	VGA+CVBS+S-Video+Audio (Optional DVI / HDMI)	
<input type="checkbox"/> AD2662GDVAR	VGA+DVI (Optional CVBS / S-Video/ Component / Audio)	
<input type="checkbox"/> AD2662GDHMVAR	VGA (Optional CVBS / S-Video/ Component / Audio / DVI / HDMI)	
F / R Control Button	<input type="checkbox"/> 5 Key <input type="checkbox"/> 4K ey	
<input type="checkbox"/> 5 Key	Power Switch, Menu, Select (+,-), Auto	
<input type="checkbox"/> 4 Key	Power Switch, Menu, Select (+,-),	
OSD Menu	Brightness, Contrast, H/V Position, Color, Phase, Clock...	
Optional	<input type="checkbox"/> AOT <input type="checkbox"/> Touch Screen	

Specifications are subject to change without notice.

All brands or product names are trademarks or registered trademarks of their respective companies.

DLF= Panel+LED Driving Board

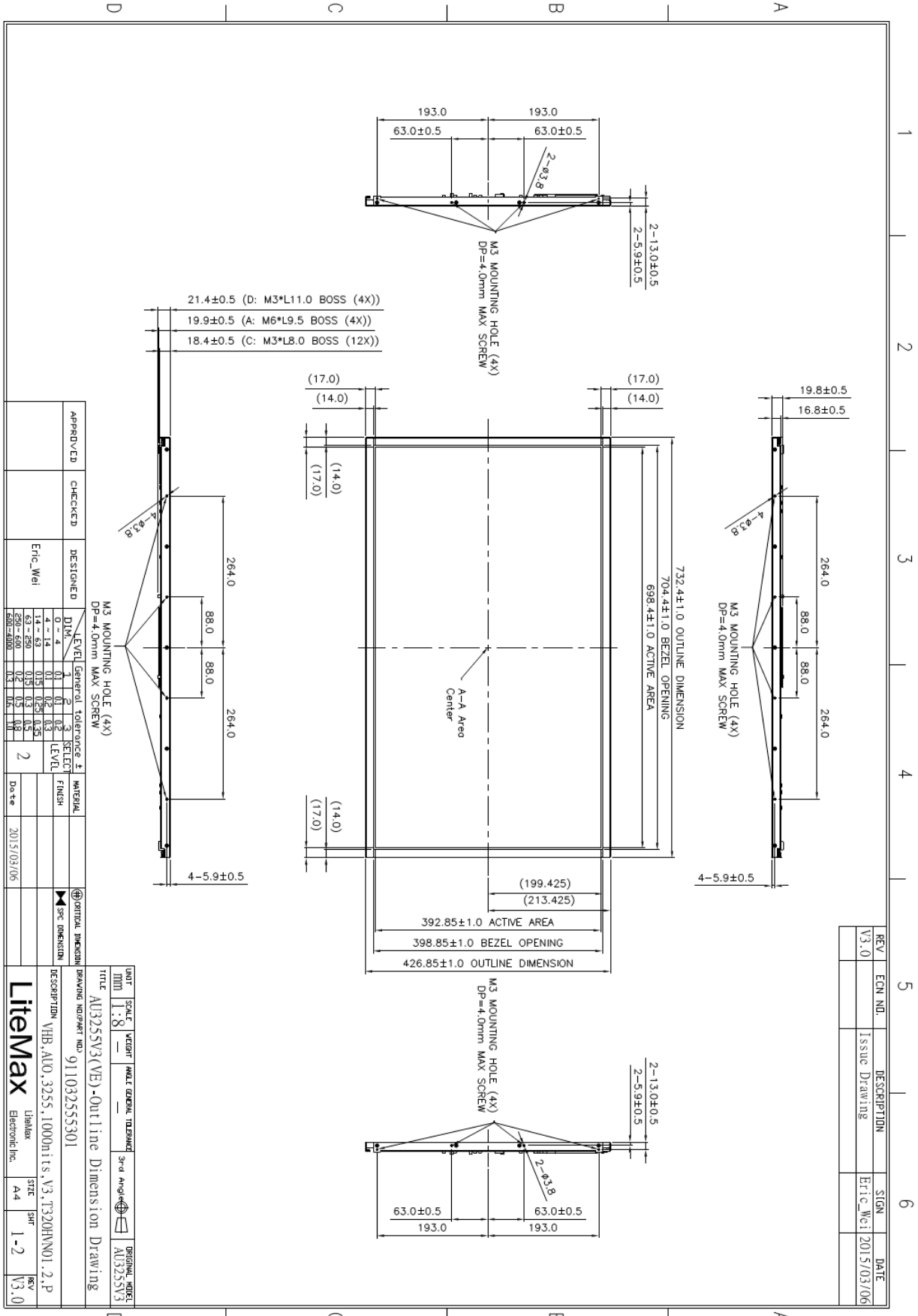
DLH= Panel+LED Driving Board+Control Board

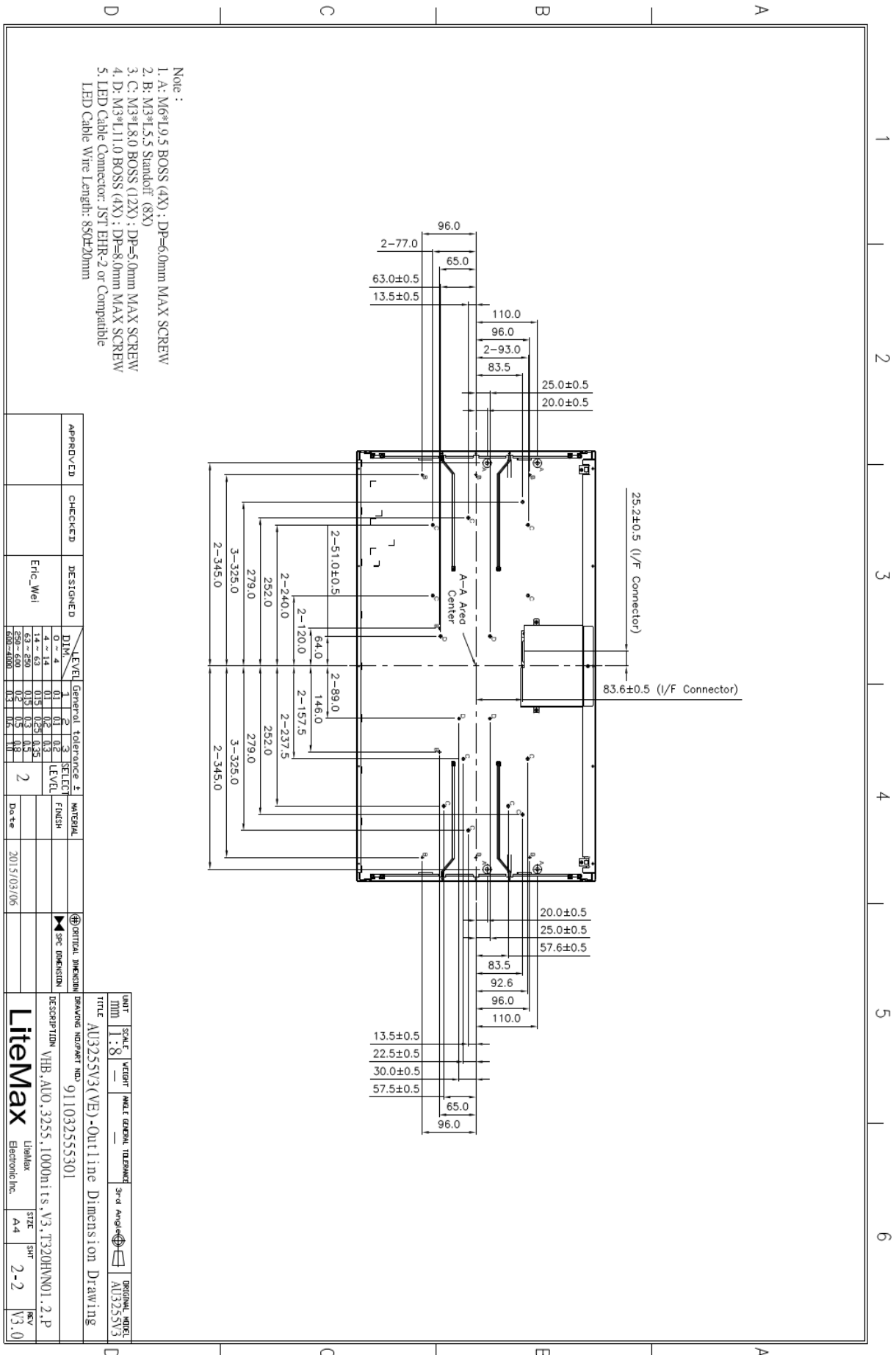


Mechanical Drawing

Outline Dimensions

Unit:mm





- Note:
1. A: M6*19.5 BOSS (4X); DP=6.0mm MAX SCREW
 2. B: M3*15.5 Standoff (8X)
 3. C: M3*18.0 BOSS (12X); DP=5.0mm MAX SCREW
 4. D: M3*11.0 BOSS (4X); DP=8.0mm MAX SCREW
 5. LED Cable Connector: JST EHR-2 or Compatible
LED Cable Wire Length: 850±20mm

APPROVED	CHECKED	DESIGNED	DIM.	LEVEL	Tolerance	SELECT	MATERIAL	VERTICAL DIMENSION	SCALE	WEIGHT	DATE	REV
		Eric_Wei	14-14	01	0.2	0.3		0.1	1:8		2015/03/06	V3.0
			14-63	015	0.25	0.35						
			63-250	015	0.3	0.5						
			250-600	02	0.5	0.8						
			600-800	0.3	0.8	1.0						

UNIT	SCALE	WEIGHT	DATE	REV
MM	1:8			

DESCRIPTION: VHB, AUO, 3255, 1000units, V3, T320HNN01.2.P

DRAWING NUMBER: 911032555301

ORIGINAL NAME: AU3255V3

DATE: 2015/03/06

SCALE: 1:8

WEIGHT: ---

DATE: ---

REV: ---

SIZE: A4

SHEET: 2-2

REV: V3.0

LiteMax Electronic Inc.



Ordering Information

Model Name	Description
DLF3255-ENN-A31	32",1000nits,FHD,LID32B,2 in 1.V04
DLH3255-ENN-G31	32",1000nits,FHD,LID32B.AD2662GDHM,AC100~240V,2 in 1,V04

Optional Accessories

Part Number	Description
810618301010	CABLE.POWER.AC.1830mm USA type
810618301090	CABLE,POWER,AC,1830mm Europe type
810618301050	CABLE.POWER.AC.1830mm UK type
810618301170	CABLE.POWER,AC,1830mm Australia type
810618301030	CABLE.POWER.AC.1830mm Japan type