

## NPD1236 12.1" IP65 Sunlight Readable Marine Display

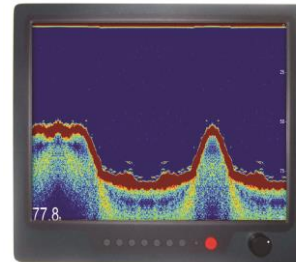
NAVPIXEL NPD1236, the high-performance, rugged touch monitor, is specially engineered to survive from the most demanding working environment. Housed in a milled billet aluminum case, the slim-profile NAVPIXEL NPD1236 is light weight and watertight. The front-mounted sunlight readable touch screen makes the industrial rugged monitor vividly and user-friendly. In addition, the high power efficiency and low heat design guarantee the stability and longevity required for mission critical deployment.

### Features:

- 1000 nits Sunlight Readable LCD
- Long Life, Low Power Consumption LED Backlight
- Wide Operating Temperature
- Advanced Optical Bonding (AOT)
- High Shock & Vibration Resistance
- Resistive Touch Support
- IP65 Facial Waterproof
- 9-36V DC Input

### Application:

- Marine



## Specifications

V1

<b>Model Number</b>	<b>NPD1236</b>
<b>Description</b>	<b>12.1" IP65 Sunlight Readable Marine Display</b>
<b>Backlight</b>	LED Backlight
<b>Active Display Area</b>	245.76 x 184.32mm
<b>Brightness</b>	1000 cd/m <sup>2</sup>
<b>Resolution</b>	1024x768(XGA)
<b>Contrast Ratio</b>	700:1
<b>Pixel Pitch (mm)</b>	0.24(H) x 0.24 (V)
<b>Viewing Angle</b>	140 (H), 140(V)
<b>Display Color</b>	262k
<b>Response Time</b>	23ms
<b>Inputs</b>	VGAX1, DVIX1, Compositex3, RS232x1, USBx1
<b>PIP Support</b>	NA
<b>Mechanical</b>	
<b>IP Rating</b>	Facial waterproof to IP65 standards when console mounted.
<b>Construction</b>	Rugged Aluminum Alloy Chassis
<b>Mounting</b>	Panel (Flush) mount, VESA mount
<b>Dimension (mm)</b>	297.2(W)x256(H)x56(D)
<b>Net Weight</b>	2.5kg
<b>Power</b>	
<b>Voltage</b>	DC Input Voltage: DC 9~36V
<b>Power Consumption</b>	24W
<b>Environmental</b>	
<b>Operating Temperature</b>	-20°C~60°C
<b>Non-Operating Temperature</b>	-20°C~70°C
<b>Certification</b>	CE / FCC
<b>Marine Type Approval</b>	BV Rule IACES-E10 certification, comply with IEC 60945

*Specifications are subject to change without notice.*

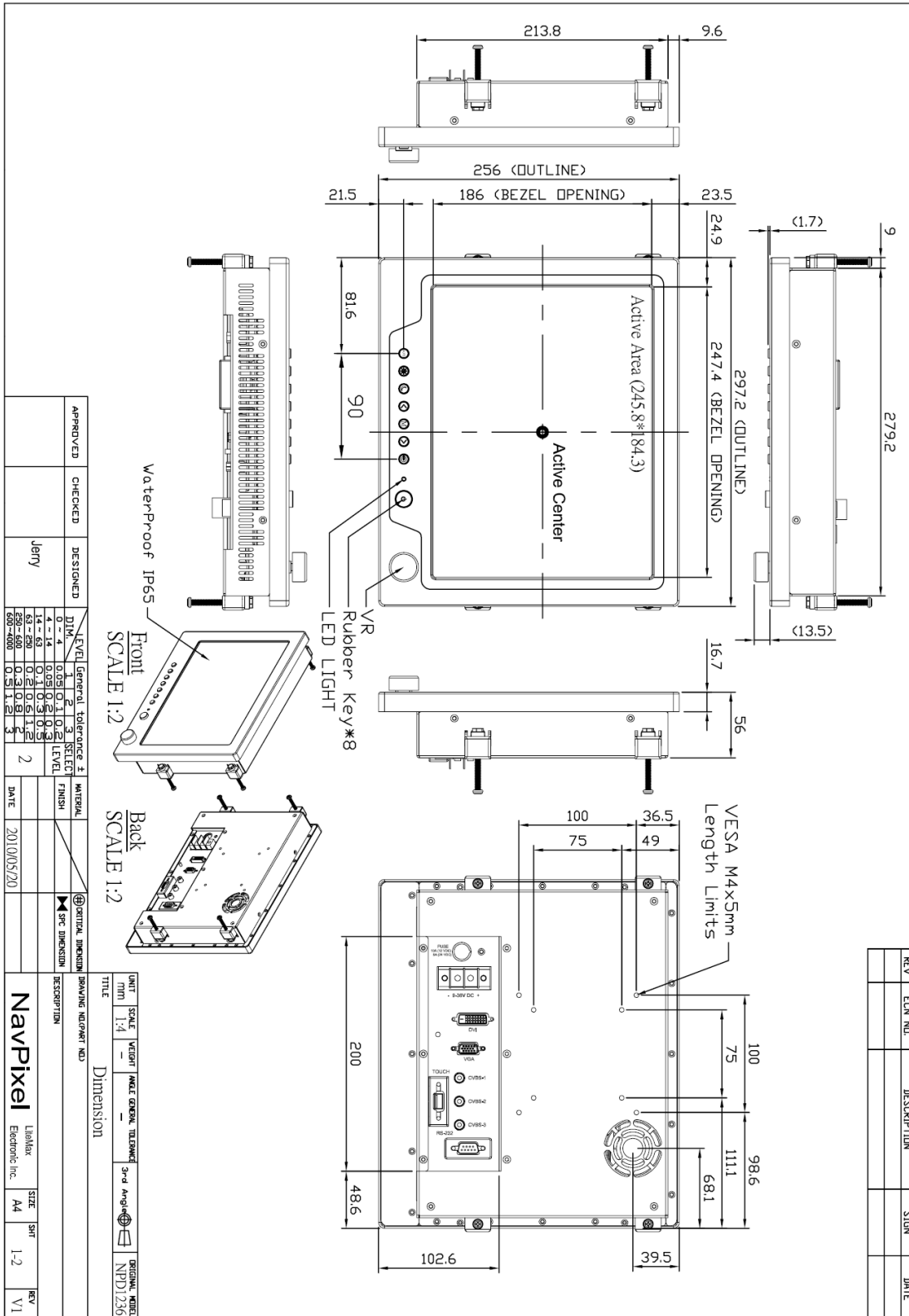
*All brands or product names are trademarks or registered trademarks of their respective companies.*



# Mechanical Drawing

## Outline Dimensions

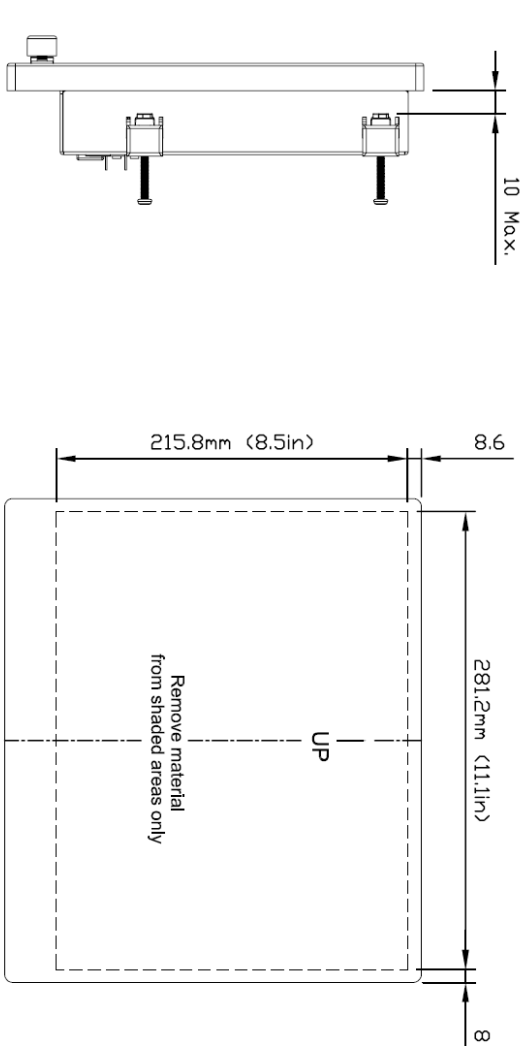
Unit:mm





REV	ECN NO.	DESCRIPTION	SIGN	DATE

### NPD1236 Flush Mount Template



Side View

Back View

APPROVED	CHECKED	DESIGNED	DIM.	LEVEL	General Tolerance ±	SELECT LEVEL	MATERIAL	FINISH	SPEC DIMENSION	SPRACING	INDICATOR NO.
		Jerry	0 - 4	1	0.05	0.1					
			4 - 14	2	0.1	0.3					
			14 - 63	3	0.3	1.2					
			63 - 250	4	1.2	5					
			250 - 630	5	5						
			630 - 4000	6							

UNIT	SCALE	WEIGHT	ANGLE	GENERAL TOLERANCE	3rd ANGLE	ORIGINAL MODEL
MM	1:4					NPD1236

TITLE: **Cutout Dimension**

DESCRIPTION: **NavPixel**

LielaX Electronic Inc. SIZE: A4 SMT: 2-2 REV: V1



## Ordering Information

Part Number	Description
NPD1236-EGAW-G01	12",1000nits,XGA,AR glass.LID12B02,AD2662,WP,AOT,V01
NPD1236-EGAW-G011	12",1000nits,XGA,AR glass.LID12B02,AD2662,WP,AOT.with adaptor,V01
NPD1236-ETAW-G01	12", 1000nits, XGA,Touch-usb.Transparency:80%,LID12B02.AD2662,WP,AOT,V01
NPD1236-ETAW-G011	12",1000nits,XGA,Touch-usb.(Transparency:80%)LID12B02.AD2662,WP,AOT,with adaptor.V01

## Optional Accessories

Part Number	Description
980000300010	SET,OTHER,CD for User. Menu & Touch driver(NPD series)
810650005110	CABLE,POWER,DC,5000mm,TER.MINAL TO OPEN,14AWG*2C+BRA.ID,COOL GRAY 7C PVC JACKET,P
810130001000	CABLE.VGA.3000mm.D-SUB15P MALE.BLUE TO D-SUB 15P MALE BLUE.BLACK.P
321189155501	Print,Menu,User,NPD.1555,V0,series,P
321179123601	Print,Menu,Install,NPD,1236.V0,Flush mount template,P
112615315401 x (4)	Metal,SPCC,NPS,1531,Lock,V0,P
214032121101 x (4)	Screw,M4,32mm,Round,Ni,P
460100002101 x (4)	Fixture,other,MP-4,V0,P
980000560010 (Optional)	SET,OTHER,ADAPTER REWORK.60W KPA-060F WITH Y TYPE.TERMINAL,P
810618301010 (Optional)	CABLE.POWER.AC.1830mm USA type
810618301090 (Optional)	CABLE,POWER,AC,1830mm Europe type
810618301050 (Optional)	CABLE.POWER.AC.1830mm UK type
810618301170 (Optional)	CABLE.POWER,AC,1830mm Australia type
810618301030 (Optional)	CABLE.POWER.AC.1830mm Japan type