



SLD1068
10.4" TFT LCD, LED Backlight 1600nits,SVGA

10.4" TFT LCD panel, built-in 1600 nits high bright for sunlight readable LCD display, high transmittance color filter, high transmission polarizing plates, Low Power Consumption, suitable for kiosk, advertising, POS, marine, transportation, gaming, studio display, gas pump.

Key Features

- Sunlight Readable
- LED Backlight
- High Shock & Vibration Resistance
- Low Power Consumption
- Wide Operation Temperature. (-20°C ~ 60°C)
- High Uniformity
- Low EMI Noise
- Wide Dimming
- Life Expectancy



Specifications

V1

Model No.	SLD1068
Description	10.4" TFT LCD, LED Backlight 1600 nits, SVGA
Display Area (mm)	210.2 (H) x 158.4(V) mm
Brightness	1,600 cd/m ²
Resolution	800 x 600 (SVGA)
Contrast Ratio	400 : 1
Pixel Pitch (mm)	0.264(H) x 0.264(V)
Viewing Angle	+45°~-65°(H), +65°~-65°(V)
Display Colors	262,144 colors
Response Time (Typical)	25ms (Typical)
Sync	LVDS
Power Consumption	11.4W
Dimensions (mm)	249.2(W) x 206.2(H) x 45.8(D)mm
Weight (Net)	1.64kg
LED Driving Board	LID 10A09
Control Board (Optional)	<input type="checkbox"/> AD5621GA <input type="checkbox"/> AD5621GD <input type="checkbox"/> AD5766GDVA <input type="checkbox"/> AD2662GDVAR
<input type="checkbox"/> AD5621GA	VGA+Audio
<input type="checkbox"/> AD5621GD	VGA+DVI
<input type="checkbox"/> AD5766GDVA	VGA+CVBS+S-Video+Audio (Optional DVI)
<input type="checkbox"/> AD2662GDVAR	VGA+DVI (Optional S-Video/ Component / Audio)
F / R Control Button	<input type="checkbox"/> 5 Key <input type="checkbox"/> 4 Key
<input type="checkbox"/> 5 Key	Power Switch, Menu, Select (+,-), Auto
<input type="checkbox"/> 4 Key	Power Switch, Menu, Select (+,-),
OSD Menu	Brightness, Contrast, H/V Position, Color, Phase, Clock...
Optional	<input type="checkbox"/> AOT <input type="checkbox"/> Touch Screen

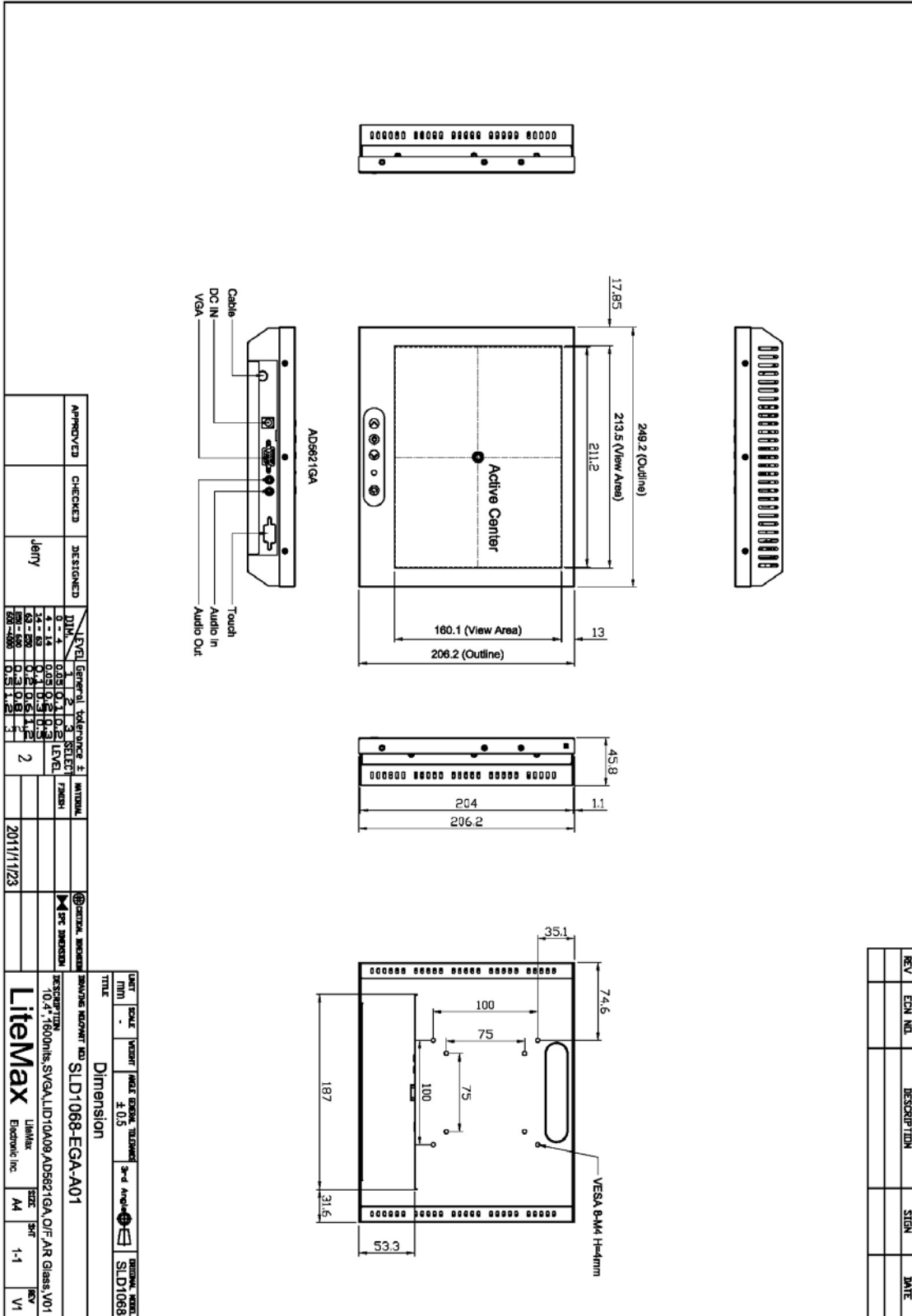
*Specifications are subject to change without notice.
 All brands or product names are trademarks or registered trademarks of their respective companies.*



Mechanical Drawing

Outline Dimensions

Unit:mm





Ordering Information

Model Name	Description
SLD1068-EGA-A01	10.4", 1600nits, SVGA, LID10A09, AD5621GA, O/F, AR Glass, V01

Optional Accessories

Part Number	Description
840612051100	ADAPTER.12V.5A.60W.EA1050A,P
810618301010	CABLE.POWER.AC.1830mm USA type
810618301090	CABLE,POWER,AC,1830mm Europe type
810618301050	CABLE.POWER.AC.1830mm UK type
810618301170	CABLE.POWER,AC,1830mm Australia type
810618301030	CABLE.POWER.AC.1830mm Japan type