



## SSF/SSH2735-A

### 27.3" Resizing LCD, 1000 nits LED backlight, 945x1080 Square aspect ratio 8:9

SSF/SSH2735-A is an innovative Square, sunlight readable, LED backlight LCD display. It provides LCD panel with specific ratios for digital signage, public transportation, exhibition hall, department store, vending machine and industrial applications. Incorporating with A.D. control board and backlight design, it is high brightness and sunlight readable panel, can display high-quality video with energy-efficient.

#### Key Features

- Resizing LCD
- Square Screen (8 : 9)
- Sunlight Readable
- LED Backlight
- High Brightness 1000 nits
- Low Power Consumption
- Wide Dimming
- Slim Bezel
- Life Expectancy (70,000hrs)
- Wide Viewing Angle



### Specifications

Preliminary

<b>Model No.</b>	<b>SSF/SSH2735-A</b>
<b>Description</b>	27.3" Resizing LCD, 1000 nits LED backlight, 945x1080
<b>Display Area</b>	457.85*523.26 mm
<b>Brightness</b>	1000 cd/m <sup>2</sup>
<b>Resolution</b>	945 x 1080
<b>Aspect Ratio</b>	8 : 9
<b>Contrast Ratio</b>	3000:1
<b>Pixel Pitch (mm)</b>	0.4845 (H) x 0.4845(W)
<b>Viewing Angle</b>	178°(H), 178°(V)
<b>Display Colors</b>	16.7M
<b>Response Time (Typical)</b>	6.5 ms
<b>Sync</b>	LVDS
<b>Power Consumption</b>	50W
<b>Dimensions (mm)</b>	502.7 x 557.1 x 18.7
<b>Weight (Net)</b>	4.1 kg
<b>LED Driving Board</b>	<b>LID27A</b>
<b>Control Board (Optional)</b>	<b>AD2662GDHMA</b>
<input type="checkbox"/> AD2662GDHMA	VGA + DVI + HDMI + Audio
<b>F / R Control Button</b>	5 Key / 4 Key
<input type="checkbox"/> 4 Key	Power Switch, Menu, Select (+,-),
<b>OSD Menu</b>	Brightness, Contrast, H/V Position, Color, Phase, Clock...
<b>Optional</b>	N/A

Specifications are subject to change without notice.

All brands or product names are trademarks or registered trademarks of their respective companies.

**SSF** = Panel + LED Driving Board

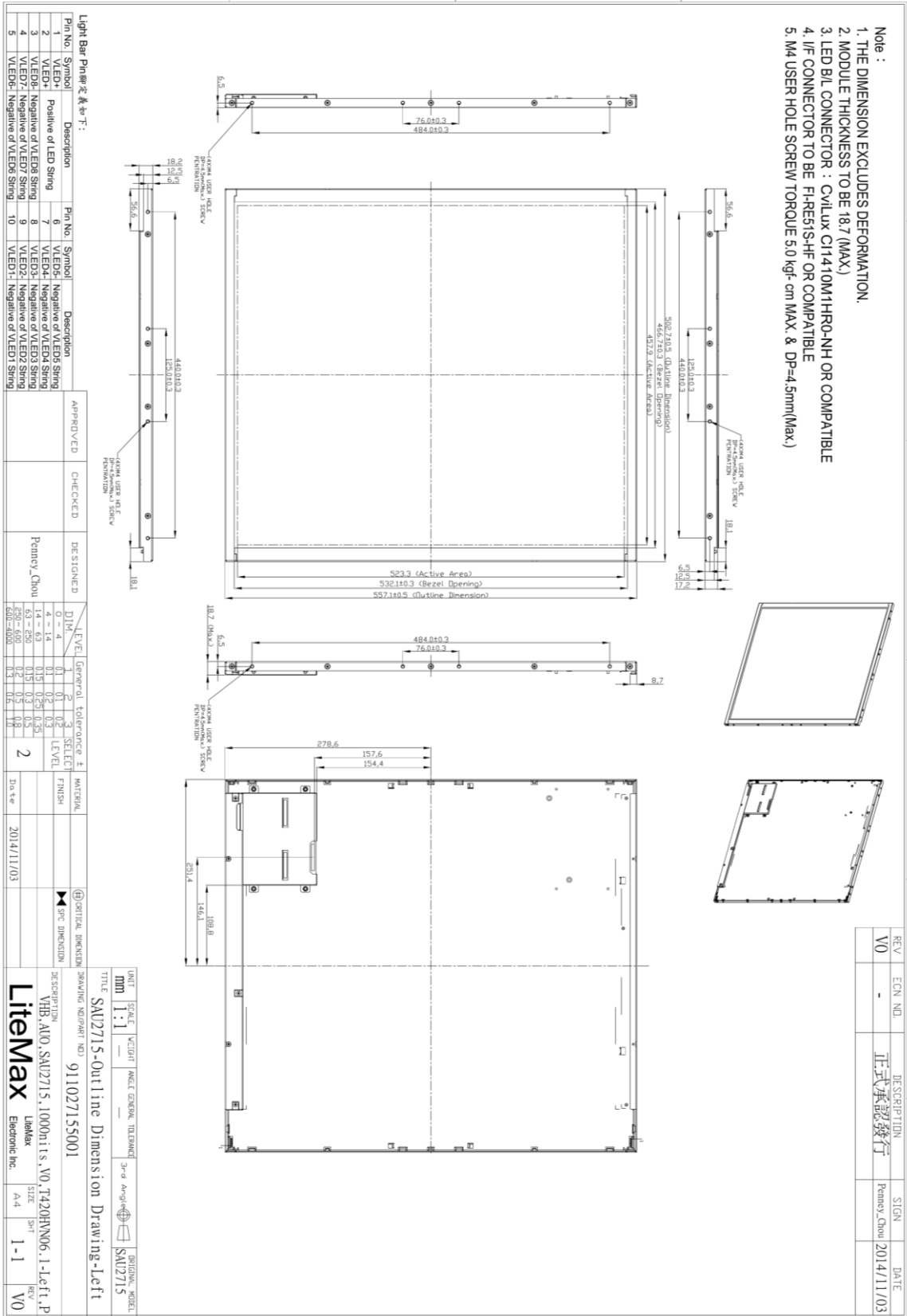
**SSH** = Panel + LED Driving Board + Control Board



# Mechanical Drawing

## Outline Dimensions

Unit: mm





### Ordering Information

Model Name	Description
SSF2735-ANN-A01	27.3",1000nits,945*1080, LID27A,V01 ( 5 in 1)
SSH2735-ANN-G01	27.3",1000nits,945*1080, LID27A, AD2662GM,DC12V ,V01 ( 5 in 1)

### Optional Accessories

Part Number	Description
810618301010 (Optional)	CABLE.POWER.AC.1830mm.(US Type).3PIN PLUG TO SOCKET.SVT(SPT-2 )18AWG 3C BLACK.P.
810618301090 (Optional)	CABLE,POWER,AC,1830mm.(EU Type) 3PIN PLUG TO.SOCKET,H05VV-F 3G.0.75MMSQ BLACK,P
810618301050 (Optional)	CABLE,POWER,AC,1830mm.UK(FUSE) 3PIN PLUG TO.SOCKET,H05VV-F 3C(3G) 0.75MMSQ BLACK,P
810618301170 (Optional)	CABLE.POWER,AC,1830mm. (AU Type) 3PIN PLUG TO 2P SOCKET.LTSA 0.75MMSQ BLACK,P
810618301030 (Optional)	CABLE.POWER.AC.1830mm.(JP Type).2PIN PLUG Y TERMINAL TO. SOCKET.VCTF 3C 0.75MMSQ BLACK,P