



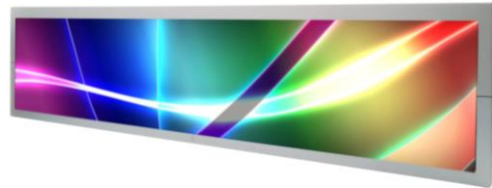
SSF2845/SSH2845-E V3

28" Resizing LCD, 1000 nits LED backlight, 1920x357 ultra wide aspect ratio 16:3

SSF2845/SSH2845-E V3 is an innovative ultra-wide, sunlight readable, LED backlight LCD display. It provides LCD panel with specific ratios for digital signage, public transportation, exhibition hall, department store, vending machine and industrial applications. Incorporating with A.D. control board and backlight design, it is high brightness and sunlight readable panel, can display high-quality video with energy-efficient.

Key Features

- Resizing LCD
- Ultra Wide Screen (16 : 3)
- Sunlight Readable
- LED Backlight
- High Brightness 1000 nits
- Low Power Consumption
- Wide Dimming
- Life Expectancy (70,000hrs)
- Wide Viewing Angle



Specifications

V1

Model No.	SSF2845/SSH2845-E V3
Description	28" Resizing LCD, 1000 nits LED backlight, 1920x357
Display Area	698.4 x 129.8 mm
Brightness	1000 cd/m ²
Resolution	1920 x 357
Aspect Ratio	16 : 3
Contrast Ratio	6500:1
Pixel Pitch (mm)	0.3637 x 0.3637
Pixel Per Inch (PPI)	69.7
Viewing Angle	178°(H), 178°(V)
Display Colors	16.7M
Response Time (Typical)	6.5 ms
Sync	LVDS
Power Consumption	30W/35W
Dimensions (mm)	735.4 x 170.5 x 18
Weight (Net)	2.1 Kg /2.3 kg
LED Driving Board	LID28A
Control Board (Optional)	AD2662GD / AD2662GDVAR
<input type="checkbox"/> AD2662GD	VGA + DVI
<input type="checkbox"/> AD2662GDVAR	VGA + DVI (Optional AV/ S-Video / Component / Audio)
<input type="checkbox"/> Others	
F / R Control Button	5 Key / 4 Key
<input type="checkbox"/> 4 Key	Power Switch, Menu, Select (+,-),
<input type="checkbox"/> 5 Key	Power Switch, Menu, Select (+,-),Auto
OSD Menu	Brightness, Contrast, H/V Position, Color, Phase, Clock...
Optional	<input type="checkbox"/> Touch Screen

Specifications are subject to change without notice.

All brands or product names are trademarks or registered trademarks of their respective companies.

SSF= Panel+ LED Driving Board

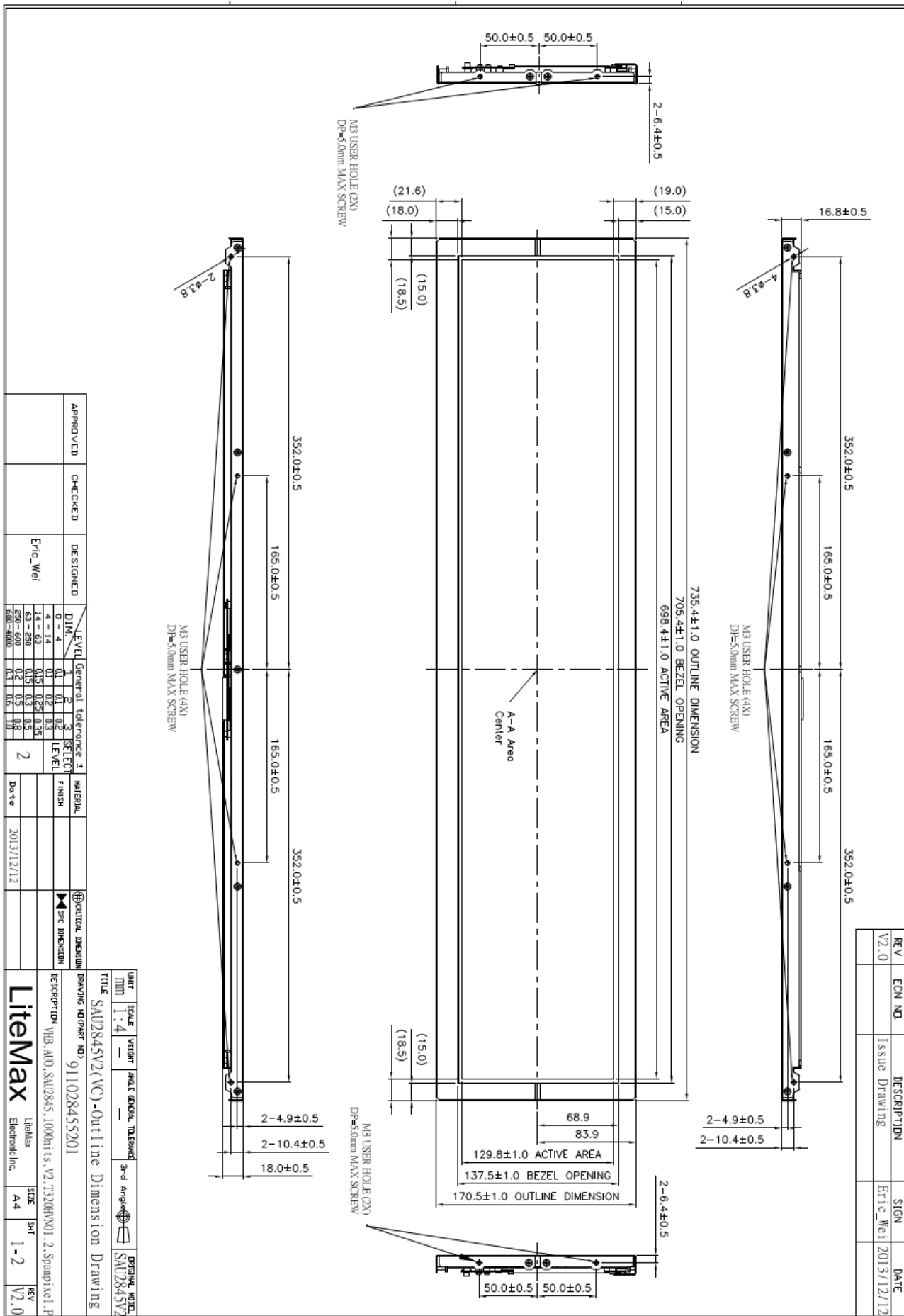
SSH= Panel+ LED Driving Board + Control Board



Mechanical Drawing

Outline Dimensions

Unit: mm



REV	ECN NO.	DESCRIPTION	SIGN	DATE
V2.0		Issue Drawing	Eric_Wei	2013/12/12

APPROVED	CHECKED	DESIGNED	DATE
		Eric_Wei	2013/12/12

DIM	LEVEL	General tolerance	SELECT LEVEL	MATERIAL	FINISH
0 - 4	1	0.1	1		
4 - 14	1	0.15	1		
14 - 50	1	0.2	1		
50 - 100	1	0.3	1		
100 - 200	1	0.4	1		
200 - 500	1	0.5	1		
500 - 1000	1	0.6	1		

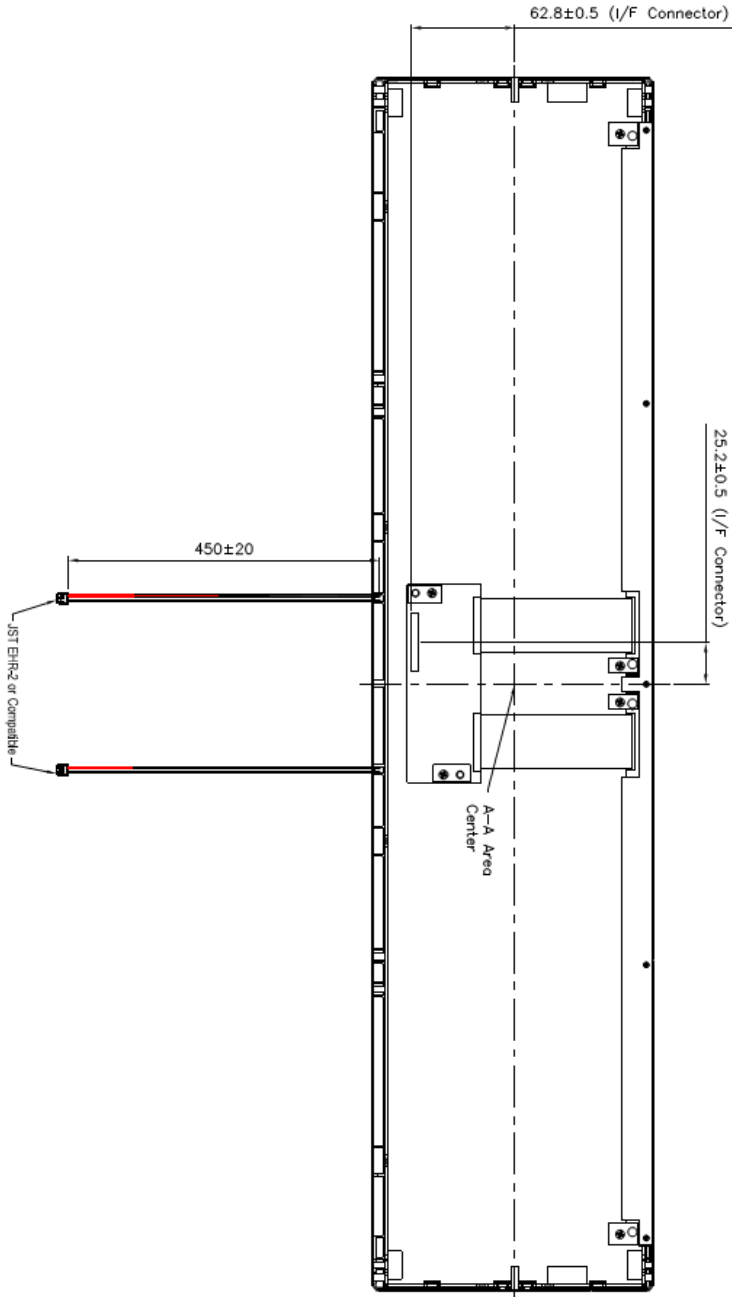
UNIT	SCALE	VECTOR	ANGLE	GENERAL TOLERANCE	3rd Angle	DRAWING NO.
MM	1:4					SAU2845V2

TITLE	DESCRIPTION	REVISION	DATE
SAU2845V2(NC)-Outline Dimension Drawing			

DESCRIPTION	LIBRARY	SIZE	SHT	REV
YHB_A00_SAU2845_1000h111_V2_T320DRX01_2_Samp1xcl_1P	LitexMax Electronic Inc.	A4	1-2	V2.0



REV	ECN NO.	DESCRIPTION	SIGN	DATE
V2.0		Issue Drawing	Eric_Wei	2013/12/12



APPROVED	CHECKED	DESIGNED	LEVEL	General Tolerance	±	SELECT	MATERIAL
		Eric_Wei	0 - 4	0.1	0.2	3	
			5 - 14	0.15	0.25	2	
			15 - 49	0.2	0.3	1	
			50 - 99	0.3	0.4	1	
			100 - 499	0.4	0.5	1	
			500 - 999	0.5	0.6	1	
			1000 - 4999	0.6	0.8	1	
			5000 - 9999	0.8	1.0	1	

UNIT	SCALE	VECTOR	ANGLE	TOLERANCE	3-D ANGLE	DRAWING NO.
MM	1:4					SAI2845V2

TITLE SAI2845V2(VC)-Outline Dimension Drawing

DRAWING NUMBER NO. 911028455201

DESCRIPTION VIB-AIO, SAI2845-1000units, V2, 7320RND01, 2, Sample1, F

LiteMax Litalax Electronic Inc. SIZE A4 SHEET 2-2 REV V2.0



Ordering Information

Model Name	Description
SSF2845-ENN-A21	28",1000nits,1920*357,LID28A.V03(4 in 1)
SSH2845-ENN-G21	28",1000nits,1920*357,LID28A.AD2662GD,DC 12V input.V03(4 in 1)

Optional Accessories

Part Number	Description
840612051210 (Optional)	ADAPTER,AC/DC,12V/5.4A,65W,Atech OEM A065112-TDx.4P SLIDING CAP,P
810618301010 (Optional)	CABLE.POWER.AC.1830mm.(US Type).3PIN PLUG TO SOCKET.SVT(SPT-2)18AWG 3C BLACK,P.
810618301090 (Optional)	CABLE,POWER,AC,1830mm.(EU Type) 3PIN PLUG TO.SOCKET,H05VV-F 3G.0.75MMSQ BLACK,P
810618301050 (Optional)	CABLE,POWER,AC,1830mm.UK(FUSE) 3PIN PLUG TO.SOCKET,H05VV-F 3C(3G) 0.75MMSQ BLACK,P
810618301170 (Optional)	CABLE.POWER,AC,1830mm. (AU Type) 3PIN PLUG TO 2P SOCKET.LTSA 0.75MMSQ BLACK,P
810618301030 (Optional)	CABLE.POWER.AC.1830mm.(JP Type).2PIN PLUG Y TERMINAL TO. SOCKET.VCTF 3C 0.75MMSQ BLACK,P