



SSF2945/SSH2945-E V2

29.3”Resizing LCD,1000 nits LED backlight, 1920x710 ultra wide aspect ratio 16:6

SSF/SSH2945-E V2 is an innovative ultra-wide, sunlight readable, LED backlight LCD display. it provides LCD panel with specific ratios for digital signage, public transportation, exhibition hall, department store, vending machine and industrial applications. Incorporating with A.D. control board and backlight design, it is high brightness and sunlight readable panel, can display high-quality video with energy-efficient.

Key Features

- Resizing LCD
- Ultra Wide Screen (16 : 6)
- Sunlight Readable
- LED Backlight
- High Brightness 1000 nits
- Low Power Consumption
- Wide Dimming
- Life Expectancy (70,000hrs)



Specifications

V1

Model No.	SSF2945/SSH2945-E V2
Description	29.3” Resizing LCD, 1000 nits LED backlight
Display Area	698.4*258.2 mm
Brightness	1000 cd/m ²
Resolution	1920 x 710
Aspect Ratio	16 : 6
Contrast Ratio	3000:1
Pixel Pitch (mm)	0.3637 x 0.3637
Pixel Pre Inch (PPI)	69.7
Viewing Angle	178°(H), 178°(V)
Display Colors	16.7M
Response Time (Typical)	8 ms
Sync	LVDS
Power Consumption	48W/53W
Dimensions (mm)	735.4 x 298.9 x 18.0
Weight (Net)	3.2 kg (VHB only)
LED Driving Board	LID29A
Control Board (Optional)	AD2662GD / AD2662GDVAR
<input type="checkbox"/> AD2662GD	VGA + DVI
<input type="checkbox"/> AD2662GDVAR	VGA + DVI (Optional AV/ S-Video / Component / Audio)
<input type="checkbox"/> Others	
F / R Control Button	5 Key / 4 Key
<input type="checkbox"/> 4 Key	Power Switch, Menu, Select (+,-),
<input type="checkbox"/> 5 Key	Power Switch, Menu, Select (+,-),Auto
OSD Menu	Brightness, Contrast, H/V Position, Color, Phase, Clock...
Optional	<input type="checkbox"/> Touch Screen

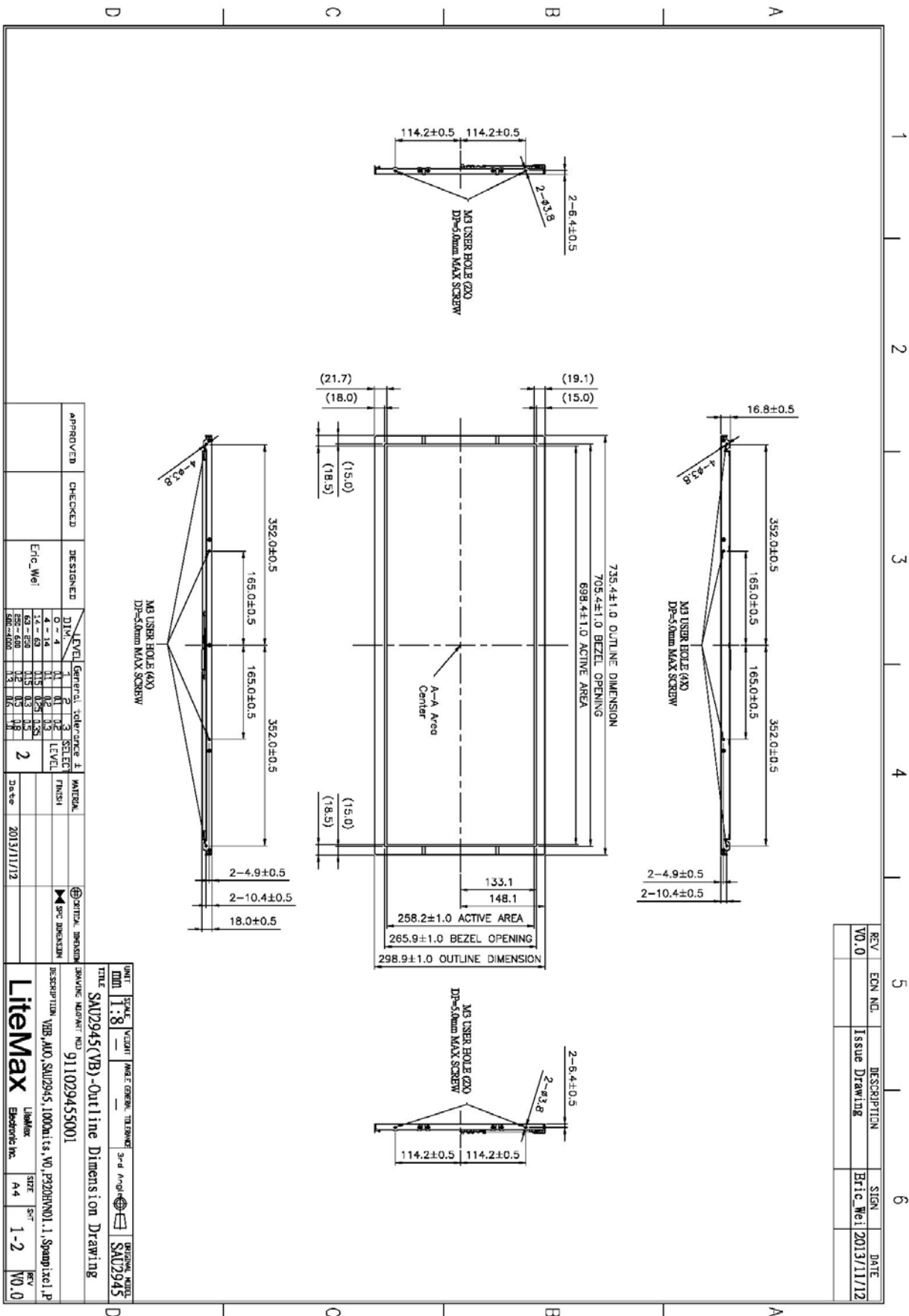
Specifications are subject to change without notice.
All brands or product names are trademarks or registered trademarks of their respective companies.

SSF= Panel+ LED Driving Board
SSH= Panel+ LED Driving Board + Control Board

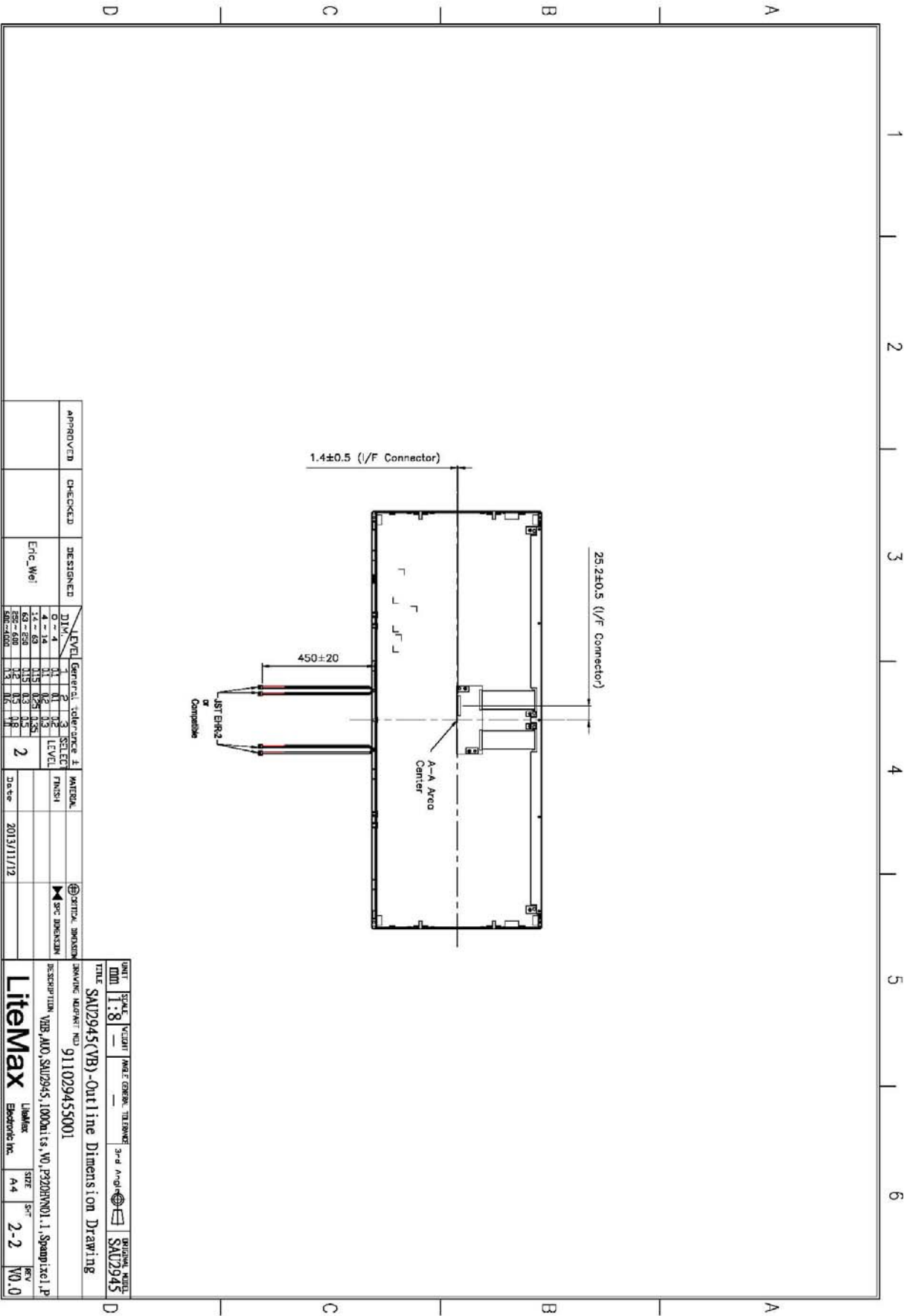


Mechanical Drawing

Outline Dimensions



A4 297x210mm



APPROVED	CHECKED	DESIGNED	DATE	LEVEL	GENERAL TOLERANCE	STEE	MATERIAL	DATE
		Eric_Wei		2				2013/11/12

UNIT	SCALE	VECT	DATE	DESIGN	3rd	REV
mm	1:8			SAU2945		
TITLE: SAU2945(VB)-Outline Dimension Drawing						
DRAWING NUMBER: 9111029455001						
DESCRIPTION: VBR_A0, SAU2945, 1000 units, NO. P220RHV01.1, Stamp, Ixel, P						
Litemax		SIZE	REV			
Electronic Inc.		A4	2-2	V0.0		

A4 297x210mm



Ordering Information

Model Name	Description
SSF2945-ENN-A11	29.3",1000nits,1920*710.LID29A,V02(2 in 1)
SSH2945-ENN-G11	29.3",1000nits,1920*710.LID29A,AD2662GD,DC 12V.V02(2 in 1)
SSH2945-ENN-G12	29.3",1000nits,1920*710.LID29A,AD2662GDHM,DC12V.V02(2 in 1)

Optional Accessories

Part Number	Description
810618301010 (Optional)	CABLE.POWER.AC.1830mm.(US Type).3PIN PLUG TO SOCKET.SVT(SPT-2)18AWG 3C BLACK,P.
810618301090 (Optional)	CABLE,POWER,AC,1830mm.(EU Type) 3PIN PLUG TO.SOCKET,H05VV-F 3G.0.75MMSQ BLACK,P
810618301050 (Optional)	CABLE,POWER,AC,1830mm.UK(FUSE) 3PIN PLUG TO.SOCKET,H05VV-F 3C(3G) 0.75MMSQ BLACK,P
810618301170 (Optional)	CABLE.POWER,AC,1830mm. (AU Type) 3PIN PLUG TO 2P SOCKET.LTSA 0.75MMSQ BLACK,P
810618301030 (Optional)	CABLE.POWER.AC.1830mm.(JP Type).2PIN PLUG Y TERMINAL TO. SOCKET.VCTF 3C 0.75MMSQ BLACK,P