



SSF/SSH3701-Y

37" Resizing LCD, 3000 nits LED backlight, 1920 x 540 ultra-wide aspect ratio 16:4.5

The SSF/SSH3701-Y is a 37 inch color TFT-LCD display with special aspect ratio 16:4.5 and wide resolution 1920 x 540. It is Litemax's Spanpixel series product which designed for high brightness 3000 nits with power efficiency LED backlight. It provides LCD panel with specific aspect ratios and sunlight readable for digital signage, public transportation, exhibition hall, department store, and vending machine.

Key Features

- Resizing LCD
- Ultra-Wide Screen (16 : 4.5)
- High Brightness 3000 nits
- Sunlight Readable
- LED Backlight
- Low Power Consumption
- LCD blacking defect free (HTni 110 °C)
- BL MTBF: 100,000 hours



Specifications

Model Name	SSF/SSH3701-Y preliminary
Description	37" Resizing LCD, 3000 nits LED backlight, 1920x540
Screen Size	37"
Display Area (mm)	904.32 (H) x 254.34 (V)
Brightness	3000 cd/m ²
Resolution	1920x540
Aspect Ratio	16 : 4.5
Contrast Ratio	5000:1
Pixel Pitch (mm)	0.47(H) x 0.47(V)
Pixel Per Inch (PPI)	54
Viewing Angle	178°(H), 178°(V)
Color Saturation (NTSC)	86%
Display Colors	16.7M
Response Time (Typical)	8ms
Video Interface	LVDS
Power Consumption	88W (with AD board 92W)
Dimensions (mm)	935.5 x 287.5 x 18.8
Bezel Size(U/B/L/R)	15/15/14/14 mm
Weight (Net)	TBD
Video Interface (SSH)	DVI-I, HDMI, DP
OSD Key	4 Keys (Power Switch, Menu, +, -)
OSD Control	Brightness, Color, Contrast, Auto Turing, H/V Position...etc
Operating Temperature	0 °C ~ 50 °C
Storage Temperature	-20 °C ~ 60 °C

SSF= Panel+ LED Driving Board

SSH= Panel+ LED Driving Board + AD Control Board

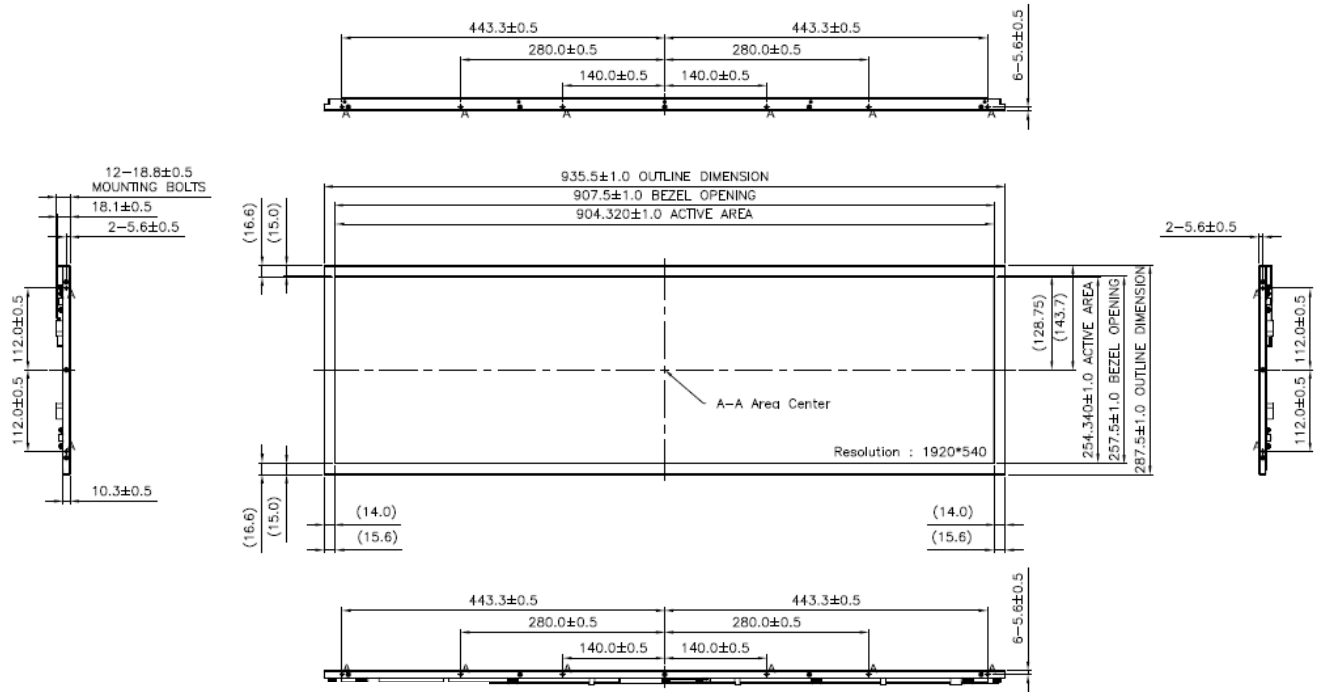
Specifications are subject to change without notice.
All brands or product names are trademarks or registered trademarks of their respective companies.



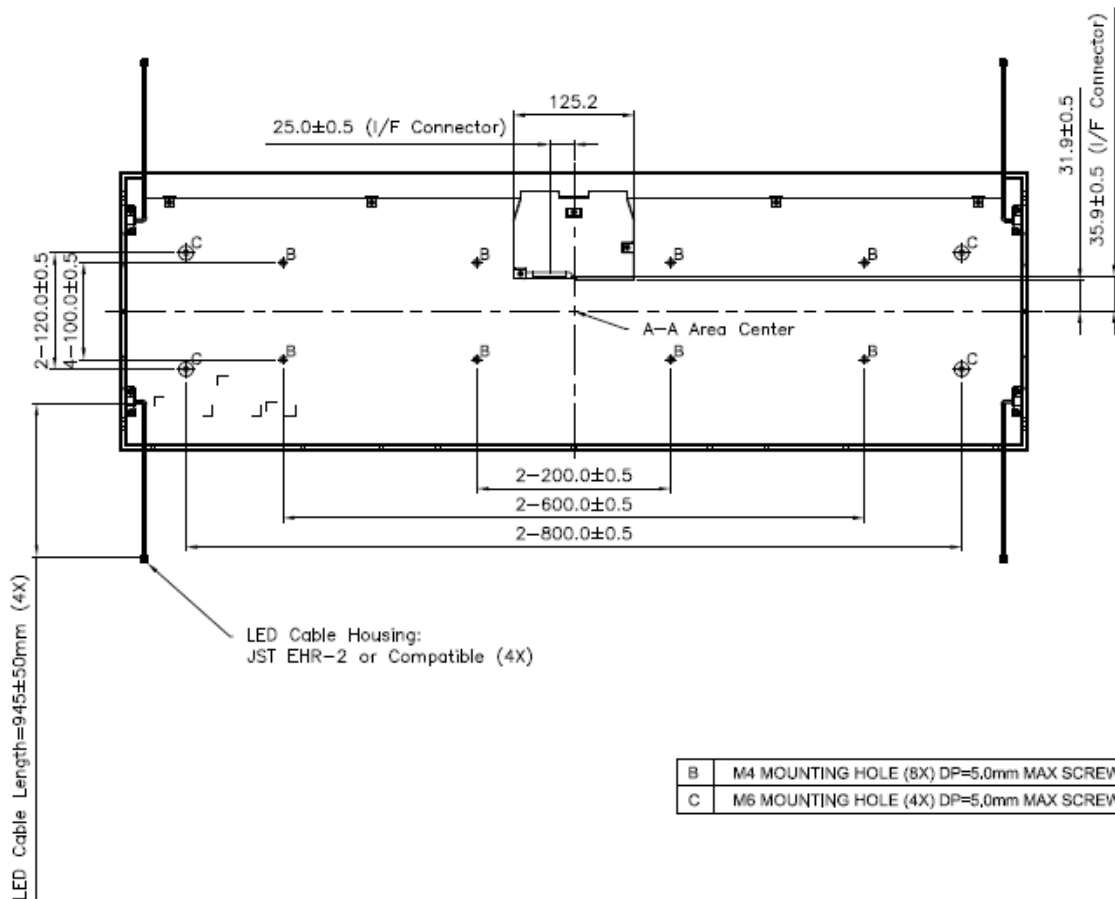
Mechanical Drawing

Outline Dimensions

Unit: mm



A M3 MOUNTING HOLE (14X) DP=4.0mm MAX SCREW



B M4 MOUNTING HOLE (8X) DP=5.0mm MAX SCREW
C M6 MOUNTING HOLE (4X) DP=5.0mm MAX SCREW



Ordering Information

Part Number	Description
SSF3701-YNN-A01	37",3000nits,1920*540,Htni,LID37A,3in1,V3
SSH3701-YNN-Q01	37",3000nits,1920*540,Htni, LID37A, AD8891DHP,DC24V, 3in1,V3