



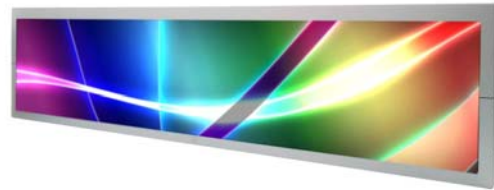
## SSF2845/SSH2845-E V3

### 28" Resizing LCD, 1000 nits LED backlight, 1920x357 ultra wide aspect ratio 16:3

SSF2845/SSH2845-E V3 is an innovative ultra-wide, sunlight readable, LED backlight LCD display. It provides LCD panel with specific ratios for digital signage, public transportation, exhibition hall, department store, vending machine and industrial applications. Incorporating with A.D. control board and backlight design, it is high brightness and sunlight readable panel, can display high-quality video with energy-efficient.

#### Key Features

- Resizing LCD
- Ultra Wide Screen (16 : 3)
- Sunlight Readable
- LED Backlight
- High Brightness 1000 nits
- Low Power Consumption
- Wide Dimming
- Life Expectancy (70,000hrs)
- Wide Viewing Angle



### Specifications

V1

<b>Model No.</b>	<b>SSF2845/SSH2845-E V3</b>
<b>Description</b>	28" Resizing LCD, 1000 nits LED backlight, 1920x357
<b>Display Area</b>	698.4 x 129.8 mm
<b>Brightness</b>	1000 cd/m <sup>2</sup>
<b>Resolution</b>	1920 x 357
<b>Aspect Ratio</b>	16 : 3
<b>Contrast Ratio</b>	6500:1
<b>Pixel Pitch (mm)</b>	0.3637 x 0.3637
<b>Pixel Per Inch (PPI)</b>	69.7
<b>Viewing Angle</b>	178°(H), 178°(V)
<b>Display Colors</b>	16.7M
<b>Response Time (Typical)</b>	6.5 ms
<b>Sync</b>	LVDS
<b>Power Consumption</b>	30W/35W
<b>Dimensions (mm)</b>	735.4 x 170.5 x 18
<b>Weight (Net)</b>	2.1 Kg /2.3 kg
<b>LED Driving Board</b>	<b>LID28A</b>
<b>Control Board (Optional)</b>	<b>AD2662GD / AD2662GDVAR</b>
<input type="checkbox"/> AD2662GD	VGA + DVI
<input type="checkbox"/> AD2662GDVAR	VGA + DVI (Optional AV/ S-Video / Component / Audio)
<input type="checkbox"/> Others	
<b>F / R Control Button</b>	5 Key / 4 Key
<input type="checkbox"/> 4 Key	Power Switch, Menu, Select (+,-),
<input type="checkbox"/> 5 Key	Power Switch, Menu, Select (+,-),Auto
<b>OSD Menu</b>	Brightness, Contrast, H/V Position, Color, Phase, Clock...
<b>Optional</b>	<input type="checkbox"/> Touch Screen

Specifications are subject to change without notice.

All brands or product names are trademarks or registered trademarks of their respective companies.

**SSF**= Panel+ LED Driving Board

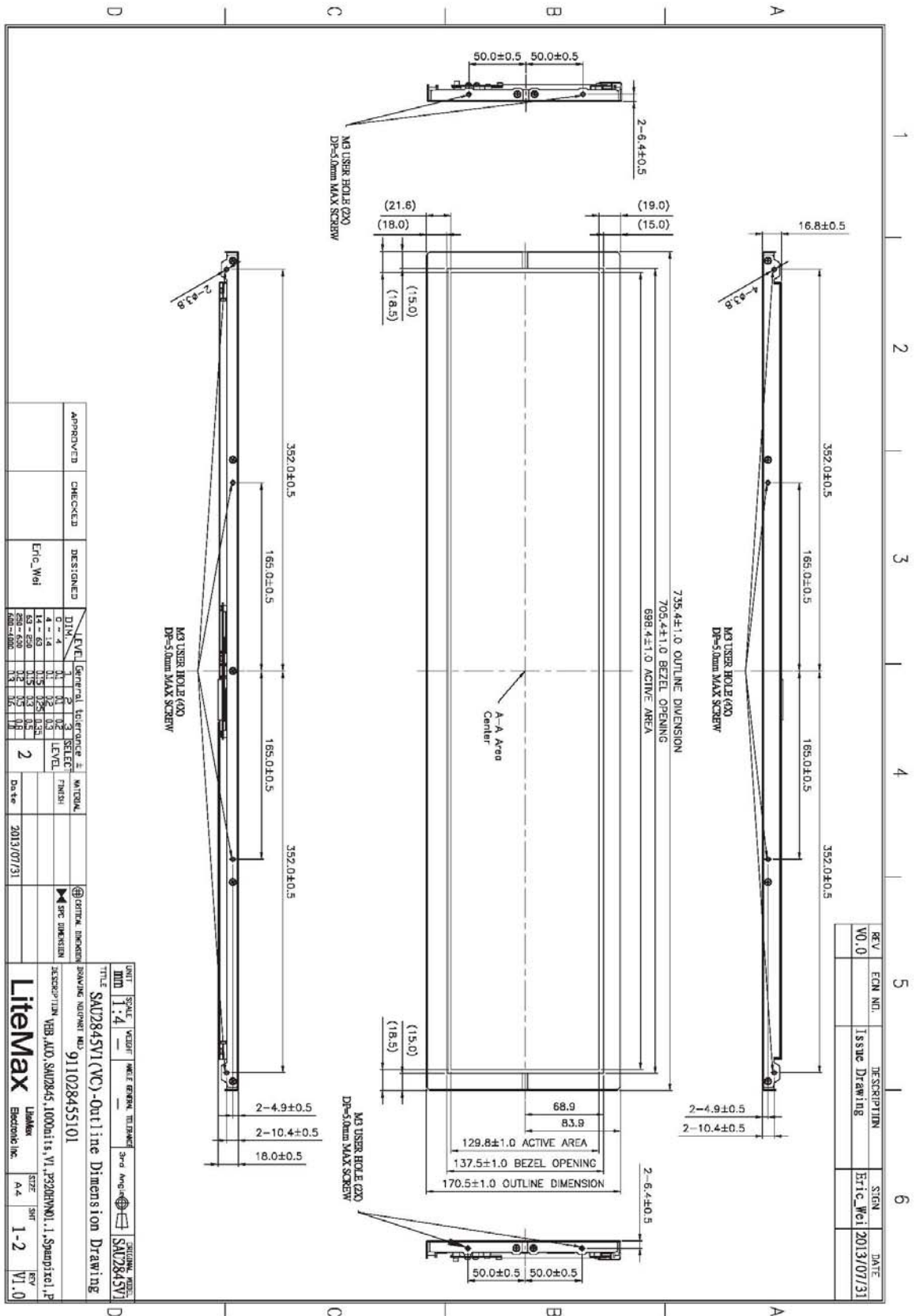
**SSH**= Panel+ LED Driving Board + Control Board



Mechanical Drawing

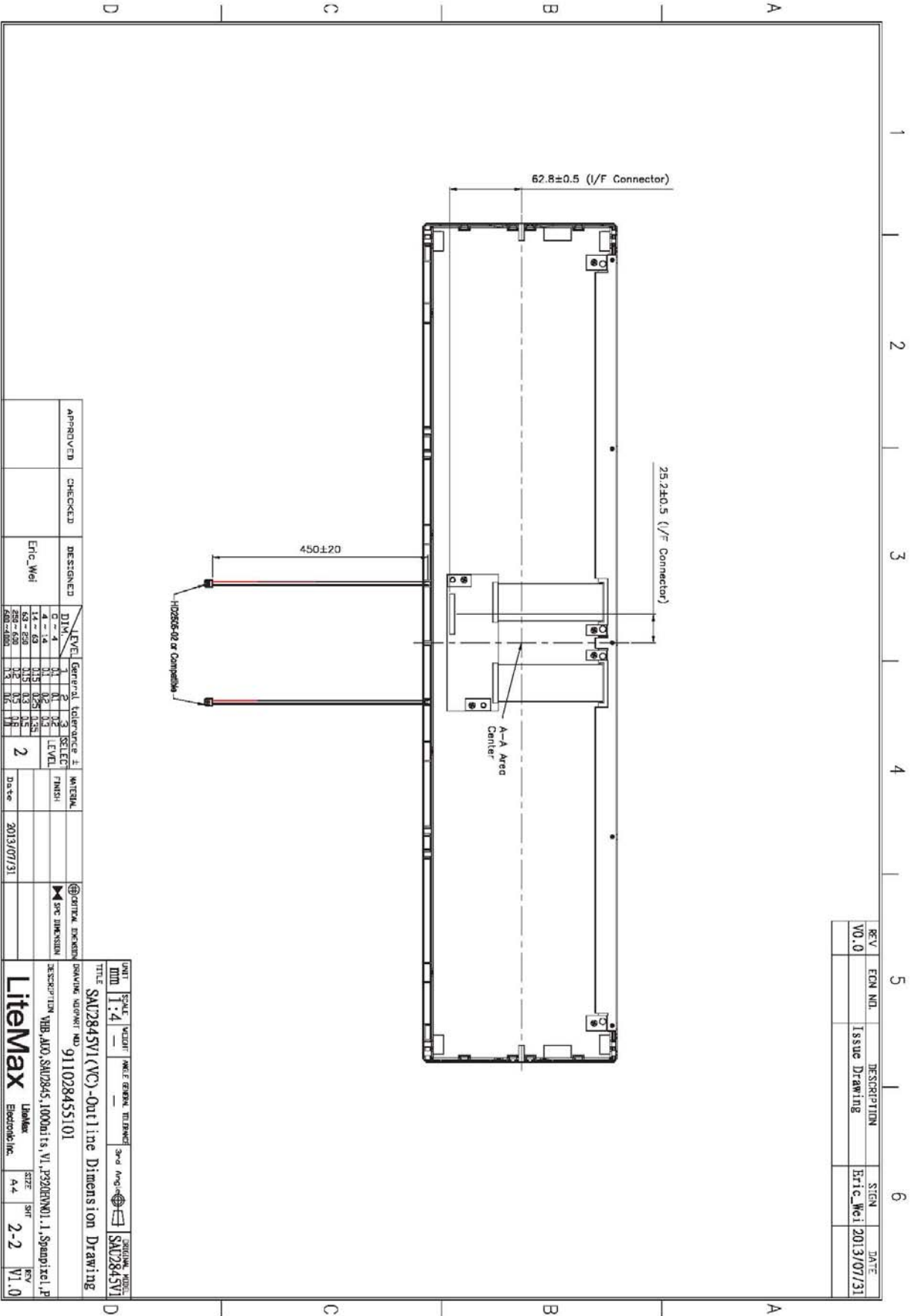
Outline Dimensions

Unit: mm



A4 297x210mm

**LiteMax**  
 Electronic Inc.



APPROVED	CHECKED	DESIGNED	LEVEL	General Tolerance ±	MATERIAL
		Eric Wei	DINA	0.2	
			4 - 14	0.1	
			14 - 69	0.15	
			69 - 850	0.3	
			850 - 1000	0.5	
			1000 - 1750	0.75	
			1750 - 3000	1.0	
			3000 - 6000	1.5	
			6000 - 10000	2.0	
			10000 - 15000	2.5	
			15000 - 20000	3.0	
			20000 - 30000	4.0	
			30000 - 40000	5.0	
			40000 - 50000	6.0	
			50000 - 60000	7.0	
			60000 - 70000	8.0	
			70000 - 80000	9.0	
			80000 - 90000	10.0	
			90000 - 100000	11.0	

A4 297x210mm

UNIT	SCALE	SCALE	SCALE	SCALE	SCALE	SCALE	SCALE	SCALE	SCALE	SCALE	SCALE	SCALE	SCALE	SCALE	SCALE
mm	1:4														
TITLE SAU2845VI(VC)-Outline Dimension Drawing DESCRIPTION VIB, AIO, SAU2845, 1000units, VI, P220(Rev)1.1, Spangixel, P DRAWING NUMBER 91102845S101 DATE 2013/07/31 Litemax LibMax Electronic Inc. A4 2-2 V1.0 SAU2845VI															

REV	EQM NO.	DESCRIPTION	SIGN	DATE
V0.0		Issue Drawing	Eric Wei	2013/07/31



### Ordering Information

Model Name	Description
SSF2845-ENN-A21	28",1000nits,1920*357,LID28A.V03(4 in 1)
SSH2845-ENN-G21	28",1000nits,1920*357,LID28A.AD2662GD,DC 12V input.V03(4 in 1)

### Optional Accessories

Part Number	Description
840612051210 (Optional)	ADAPTER,AC/DC,12V/5.4A,65W,Atech OEM A065112-TDx.4P SLIDING CAP,P
810618301010 (Optional)	CABLE.POWER.AC.1830mm.(US Type).3PIN PLUG TO SOCKET.SVT(SPT-2 )18AWG 3C BLACK,P.
810618301090 (Optional)	CABLE,POWER,AC,1830mm.(EU Type) 3PIN PLUG TO.SOCKET,H05VV-F 3G.0.75MMSQ BLACK,P
810618301050 (Optional)	CABLE,POWER,AC,1830mm.UK(FUSE) 3PIN PLUG TO.SOCKET,H05VV-F 3C(3G) 0.75MMSQ BLACK,P
810618301170 (Optional)	CABLE.POWER,AC,1830mm. (AU Type) 3PIN PLUG TO 2P SOCKET.LTSA 0.75MMSQ BLACK,P
810618301030 (Optional)	CABLE.POWER.AC.1830mm.(JP Type).2PIN PLUG Y TERMINAL TO. SOCKET.VCTF 3C 0.75MMSQ BLACK,P